

Prefill valve

RE 20485/04.08
Replaces: 07.06

1/10

Type SFA

Sizes 25 to 80
Component series 1X
Maximum operating pressure 350 bar



H6714

Table of contents

Inhalt	Seite
Features	1
Ordering code	2
Symbols	2
Function, section	3
Technical data	4
Characteristic curves	5
Unit dimensions	6 to 8
Valve fixing screws and connections	9
Poppet geometry and calculation of minimum pilot pressure	9
Maximum flow for various applications	10

Features

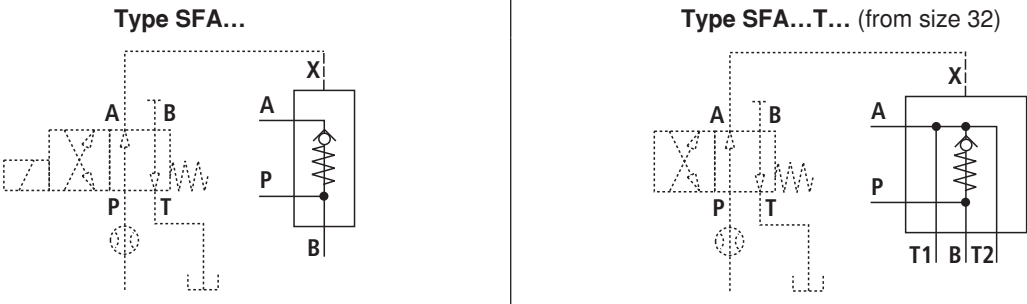
- Pilot operated check valve
 - for threaded connection (sizes 25 and 32)
 - for flange connection to ISO 6162-1 (from size 40)
- For direct mounting onto a working cylinder
- With or without pre-decompression, optional
- Integrated high-pressure port

Information on available spare parts:
www.boschrexroth.com/spc

Ordering code

SFA						-1X / M / 01	*
Prefill valve							Further details in clear text
Size 25	= 25						Connection version 01 = Female pipe thread to ISO 228, DIN 3852 part 2 Seal material NBR seals (other seals on enquiry) ⚠ Caution! Observe compatibility of seals with hydraulic fluid used!
Size 32	= 32						
Size 40	= 40						
Size 50	= 50						
Size 63	= 63						
Size 80	= 80						
Type of connection (port A)							
for threaded connection (only sizes 25 and 32)		= G					
for flange connection (from size 40)		= F					
Without tank bore		= No code					
With tank bore (from size 32)		= T					
With pre-decompression (from size 32)						1X =	Component series 10 to 19 (Series 10 to 19: unchanged installation and connection dimensions)
Without pre-decompression							

Symbols



Note!
Proposed circuit with directional valve and orifice in channel P for a single pre-fill valve.
In the case of parallel connection of pre-fill valves, a separate orifice must be provided for each pilot line!