

Subplates size 32 with porting pattern according to DIN 24340 form A, ISO 4401 and CETOP-RP 121 H

RE 45060/02.11
Replaces: 01.03

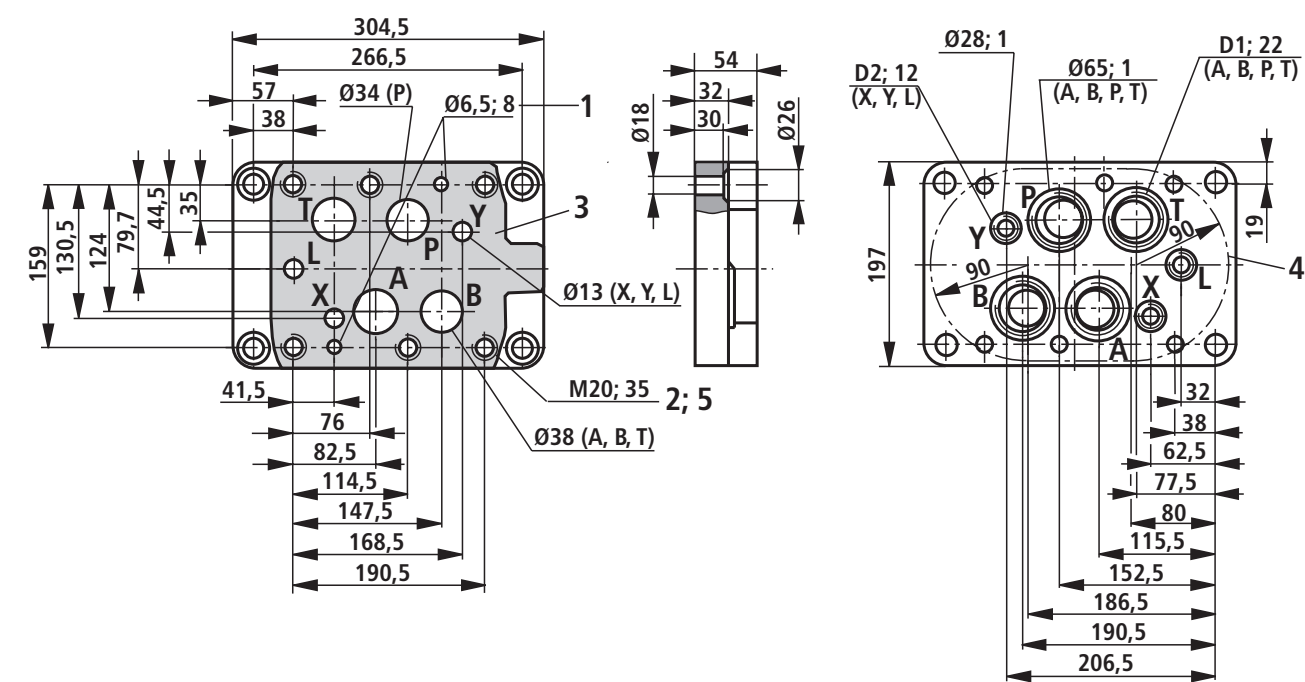
1/4

Maximum operating pressure 350 bar
Size 32

Table of contents

Contents	Page
Type G 157/01 (G1 1/2) and Type G 157/02 (M48 x 2)	2
Type G 158/10	3

Type G 157/01 (G1 1/2) and Type G 157/02 (M48 x 2) (nominal dimensions in mm)

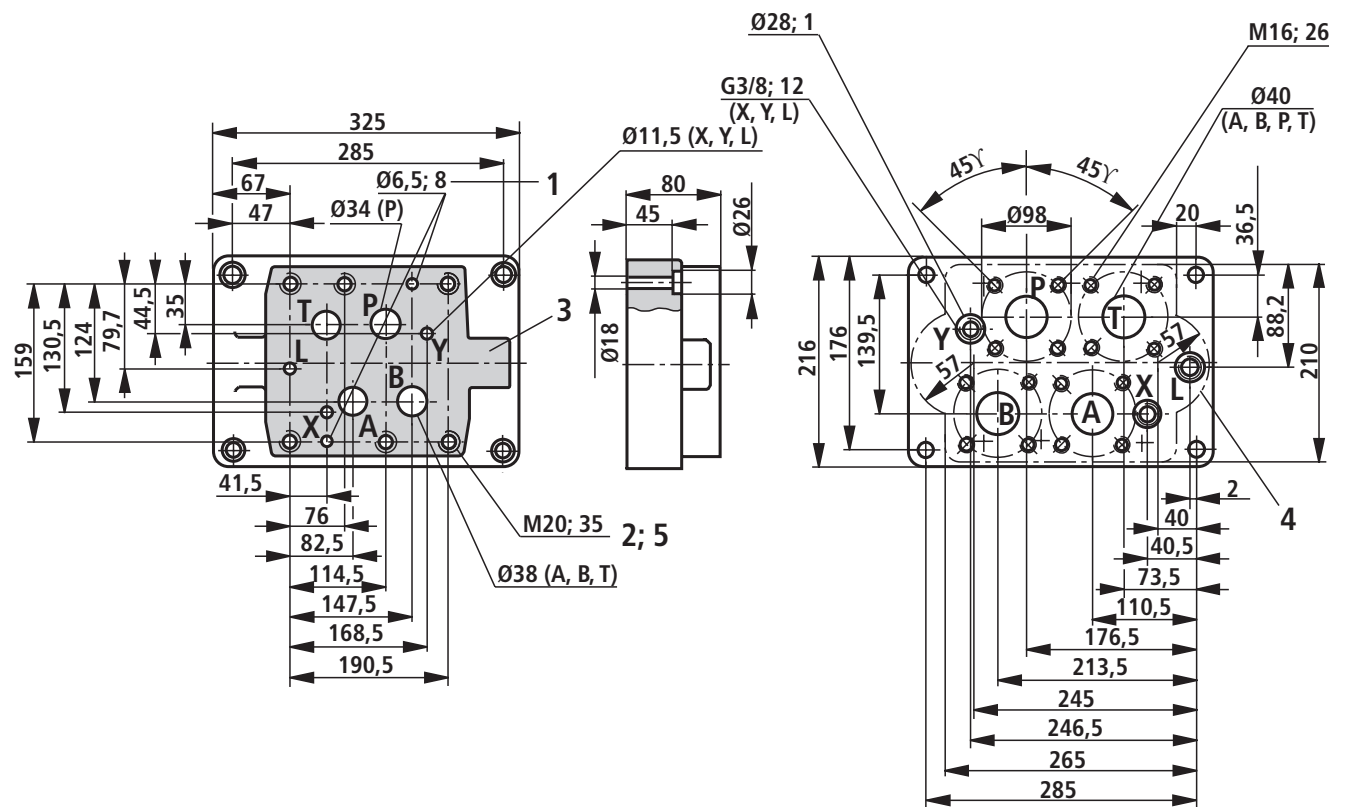


Leakage port L only with valves with pressure-centered zero position

Type	Material no.	Weight in kg	D1	D2	Valve mounting screws
G 157/01	R900424402	18	G 1 1/2	G 3/8	6 hexagon socket head cap screws ISO 4762 - M20 - 10.9 (separate order)
G 157/02	R900424403		M48 x 2	M18 x 1.5	

- 1 Bore for locating pin
- 2 Valve mounting thread
- 3 Valve mounting face
- 4 Front panel break-through
- 5 Valve mounting screws
6 hexagon socket head cap screws
ISO 4762 - M20 - 10.9 (separate order)

Note on the valve mounting screws:
Length and tightening torque of the screws depend on the valve types and the sandwich plates that might be provided.

Type G 158/10 (nominal dimensions in mm)**Connection flanges for G 158/10**

Operating pressure	Material no.
up to 160 bar	R900303901
up to 320 bar	R900303921
up to 400 bar	R900303931

Leakage port L

only with valves with pressure-centered zero position

Type	Material no.	Weight in kg
G 158/10	R900424227	30.5

- 1 Bore for locating pin
- 2 Valve mounting thread
- 3 Valve mounting face
- 4 Front panel break-through
- 5 Valve mounting screws 6 hexagon socket head cap screws ISO 4762 - M20 - 10.9 (separate order)

Note on the valve mounting screws:

Length and tightening torque of the screws depend on the valve types and the sandwich plates that might be provided.

Notes
