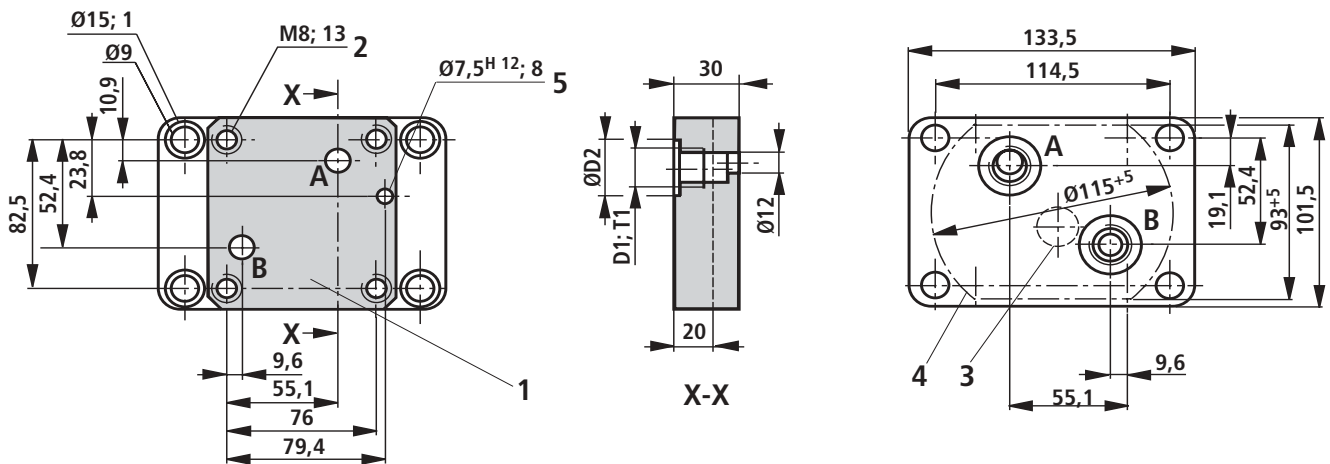


RE 45 066/01.03

Replaces: 05.86

**Subplates NS 10 and NS 16
with porting patterns to DIN 24 340 Form G,
ISO 6263 and CETOP-RP 121 H****Types G 279/01 (G 1/2); G 280/01 (G 3/4) - nominal size 10 (dimensions in mm)**

Type	Material No.	D1	ØD2	T1	Weight	Valve fixing screws ¹⁾
G 279/01	R900424433	G 1/2	34	15	2.3 kg	4 S.H.C.S. M8 DIN 912-10.9 (must be ordered separately)
G 280/01	R900424437	G 3/4	42	17	2.3 kg	

- 1 Valve mounting face, grounded
- 2 Valve fixing holes
- 3 Ø20; keep free from drillings, used for orifice support
- 4 Valve panel cut-out
- 5 Drilling for locating pin

¹⁾ **Note on valve fixing screws:**

The length and tightening torque for the screws are dependent on the valve type and any sandwich plate valves which may be fitted.

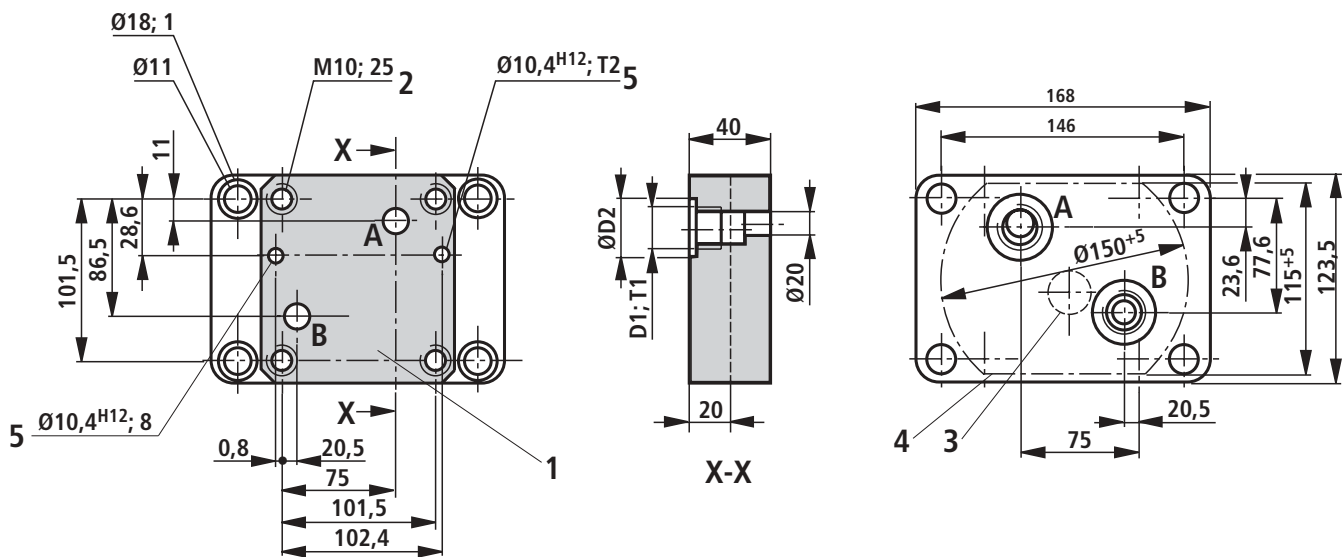


© 2002
by Bosch Rexroth AG, Industrial Hydraulics, D-97813 Lohr am Main

All rights reserved. No part of this document may be reproduced or stored, processed, duplicated or circulated using electronic systems, in any form or by means, without the prior written authorisation of Bosch Rexroth AG. In the event of contravention of the above provisions, the contravening party is obliged to pay compensation.

This document was prepared with the greatest of care, and all statements have been examined for correctness. This document is subject to alterations for reason of the continuing further developments of products. No liability can be accepted for any incorrect or incomplete statements.

Types G 281/01 (G 1); G 282/01 (G 1 1/4) - nominal size 16 (dimensions in mm)



Type	Material No.	D1	ØD2	T1	T2	Weight	Valve fixing screws ¹⁾
G 281/01	R900424440	G 1	47	19	8	4 kg	4 S.H.C.S. M8 DIN 912-10.9 (must be ordered separately)
G 282/01	R900424442	G 1 1/4	56	21	4.5	4 kg	

- 1 Valve mounting face, grounded
- 2 Valve fixing holes
- 3 Ø30; keep free from drillings, used for orifice support
- 4 Valve panel cut-out
- 5 Drilling for locating pin

¹⁾ Note on valve fixing screws:

The length and tightening torque for the screws are dependent on the valve type and any sandwich plate valves which may be fitted.

**Bosch Rexroth AG
Industrial Hydraulics**

D-97813 Lohr am Main
Zum Eisengießer 1 • D-97816 Lohr am Main
Telefon 0 93 52 / 18-0
Telefax 0 93 52 / 18-23 58 • Telex 6 89 418-0
eMail documentation@boschrexroth.de
Internet www.boschrexroth.de

Bosch Rexroth Limited

Cromwell Road, St Neots
Cambs, PE19 2ES
Tel: 0 14 80/22 32 56
Fax: 0 14 80/21 90 52
E-mail: info@boschrexroth.co.uk

The data specified above only serves to describe the product. No statements concerning a certain condition or suitability for a certain application can be derived from our information. It must be remembered that our products are subject to a natural process of wear and ageing.